

عبد
المنعم
RESIDENCE





INDEX

Location

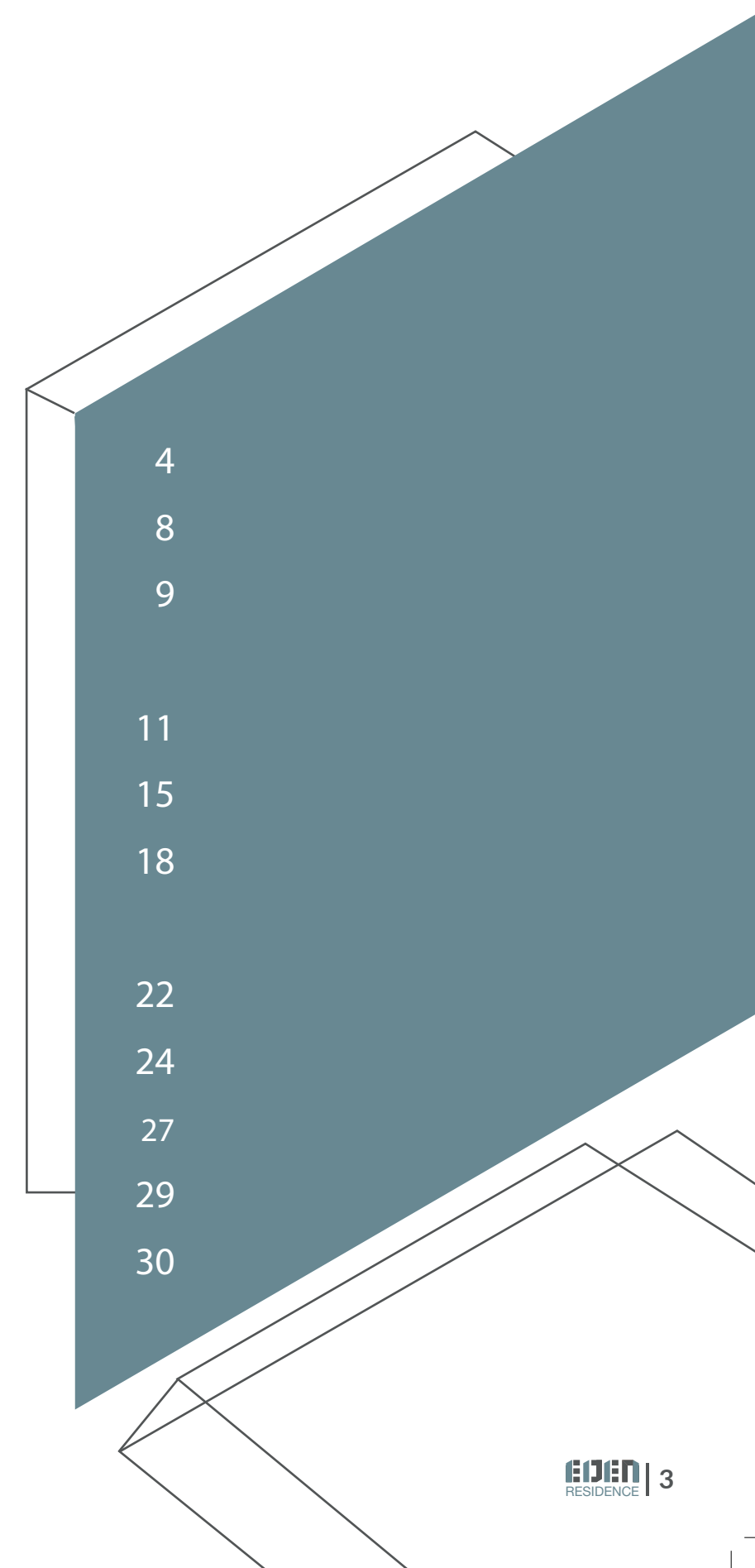
- EDEN Destination Map

Plans

- Basement Floor Plan
- Ground Floor Plan
- Typical Floor Plan Block A
- Typical Floor Plan Block B
- Typical Floor Plan Block C

Interior Design

- Entrance
- Salon
- Master Bedroom
- Kitchen
- Specifications



4

8

9

11

15

18

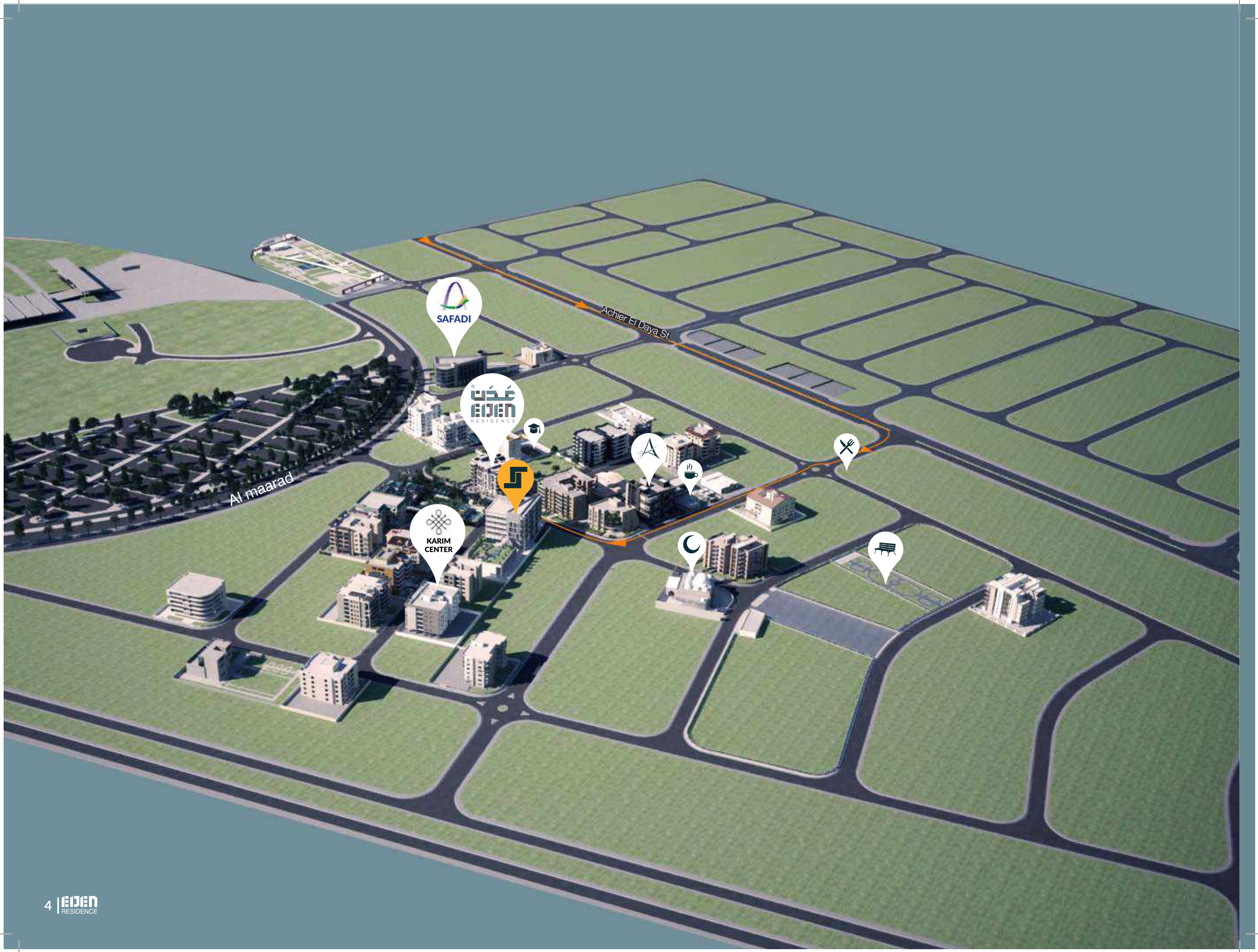
22

24

27

29

30



LOCATION IN DAM WEL FAREZ

Aden is located in Front of The Engineer's Syndicate in Tripoli with a stunning View and Lovely open architecture, and a great Location in Dam w Farez.



Engineer's Syndicate



Lemon Graden



Al wafaa Mosque



Al Jeel Alwaed School



Karim Center



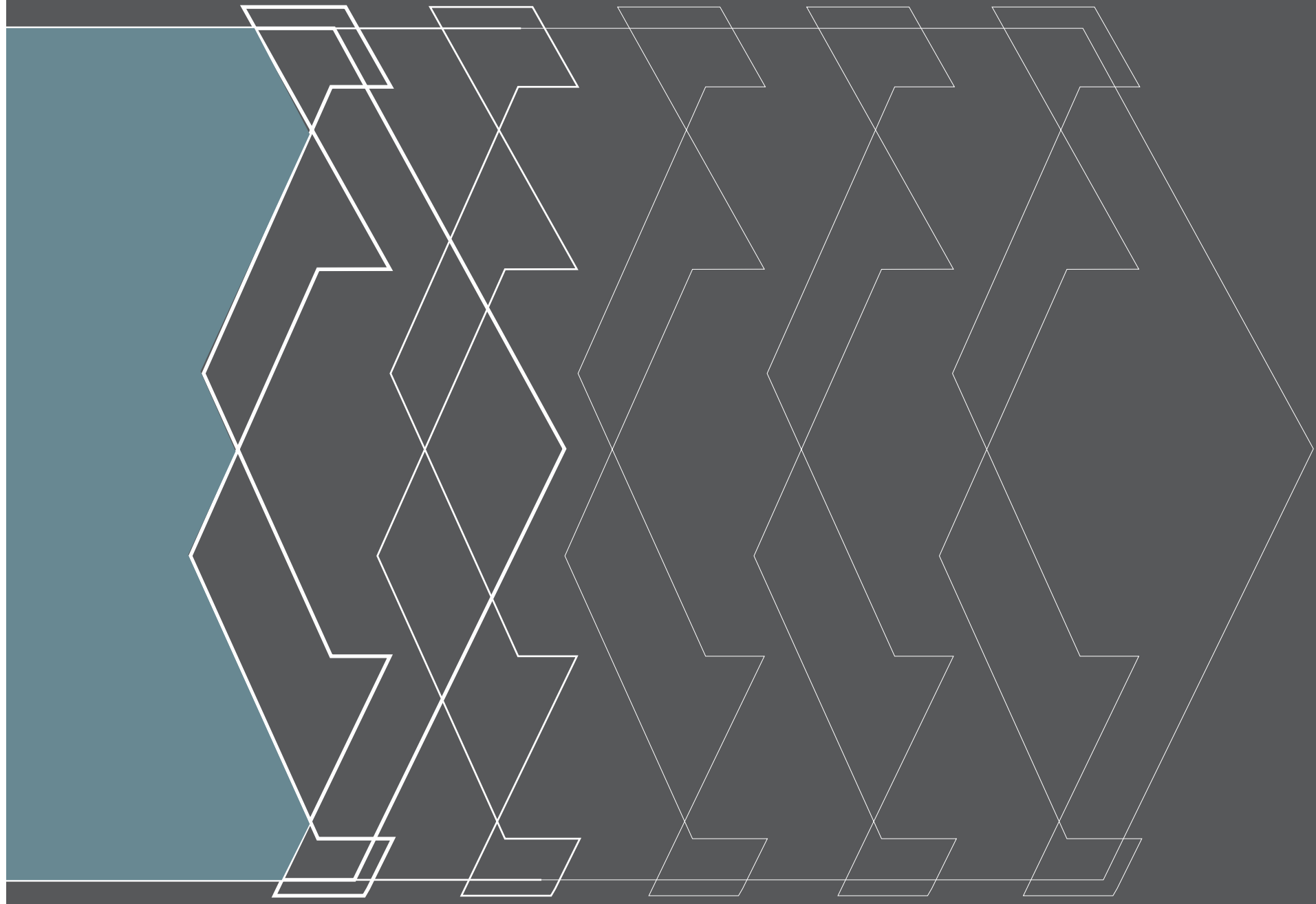
Asia



Laplaka



Safadi





PLANS

BASEMENT FLOOR PLAN

GROUND FLOOR PLAN

TYPICAL FLOOR PLAN BLOCK A

TYPICAL FLOOR PLAN BLOCK B

TYPICAL FLOOR PLAN BLOCK C

BASEMENT FLOOR PLAN



GROUND FLOOR PLAN



Block A | 233 sqm

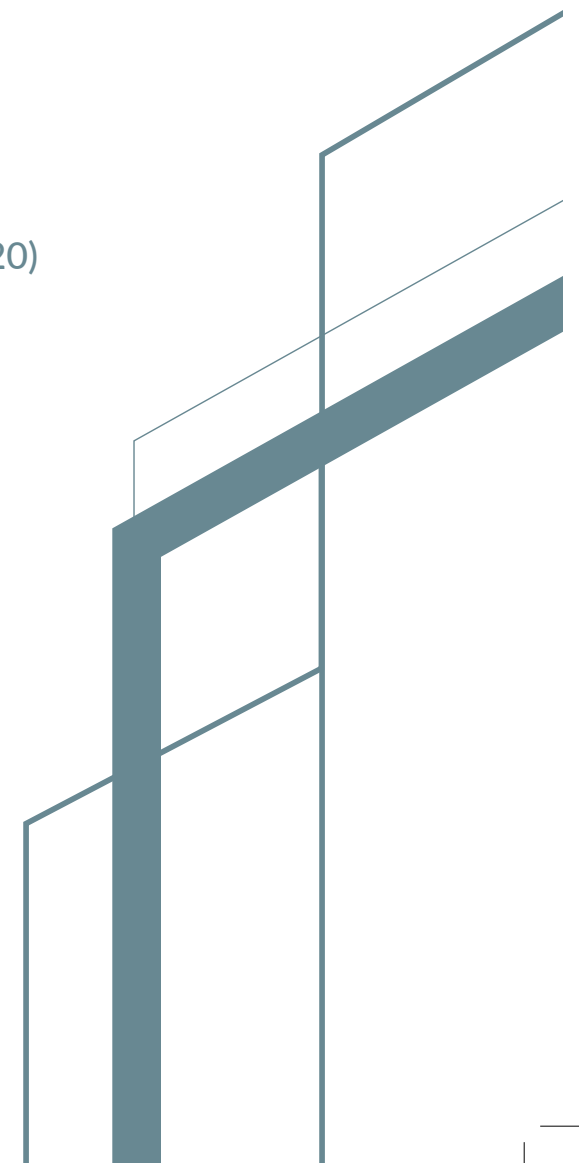
DON'T MISS THE CHANCE OF OWNING YOUR DREAM HOME AND EXPERIENCING THE SEVEN STAR LIFESTYLE



عَدْن
بلوكاً

TYPICAL FLOOR PLAN | BLOCK A | 233 SQM

- Master Bedroom(525x335)
- Salon & Dining (820x415)
- Living Room (455x355)
- Bedroom 1 (395x395)
- Bedroom 2 (395x335)
- Bathroom 1 (150x200)
- Bathroom 2 (175x330)
- Balcony 1 (590x210)
- Balcony 2 (330x140)
- Kitchen (350x505)
- Maid's Room (175x220)







life Began in



Block B | 215 SQM





TYPICAL FLOOR PLAN | BLOCK B | 215 sqm

- Salon (735x395)
- Dining Room (395x380)
- Living Room (400x435)
- Master Bedroom(355x455)
- Bedroom 1 (390x340)
- Bedroom 2 (455x340)
- Bathroom 1 (250x170)
- Bathroom 2 (200x145)
- Bathroom 3 (225x180)
- Balcony 1 (535x215)
- Balcony 2 (185x505)
- Kitchen (450x360)
- Maid's Room (195x135)



Balcony 1

Bedroom 1

Bathroom 1

Bathroom 2

Bedroom 2

Balcony 2



عَدْن

EDEN



Block | C 195 sqm

Our focus is on your happiness and comfort.



Balcony 1

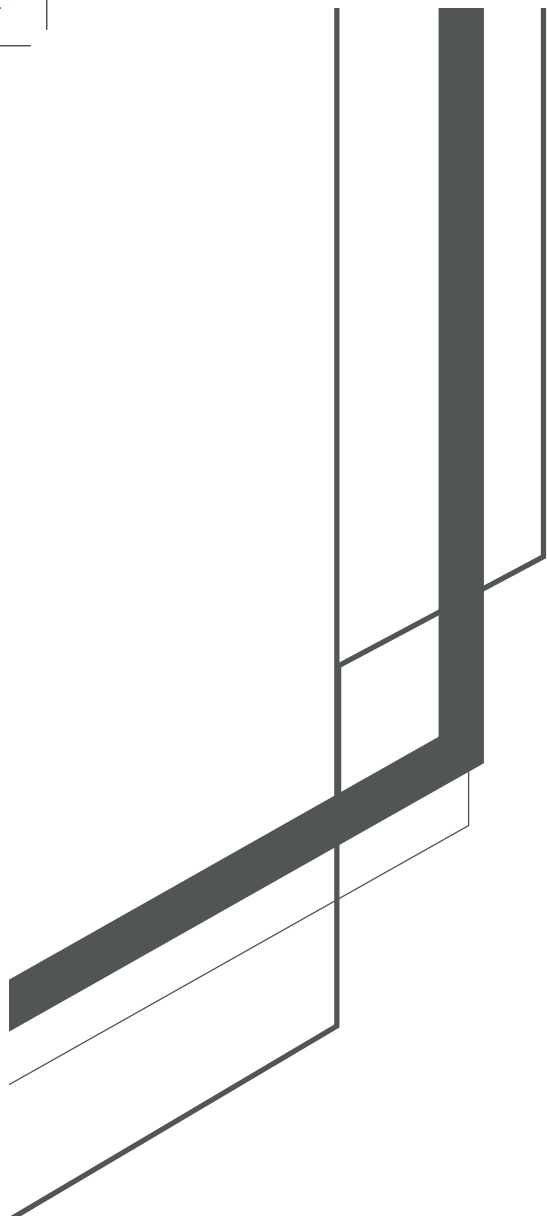
Bedroom 2

Bathroom 2

Bedroom 1

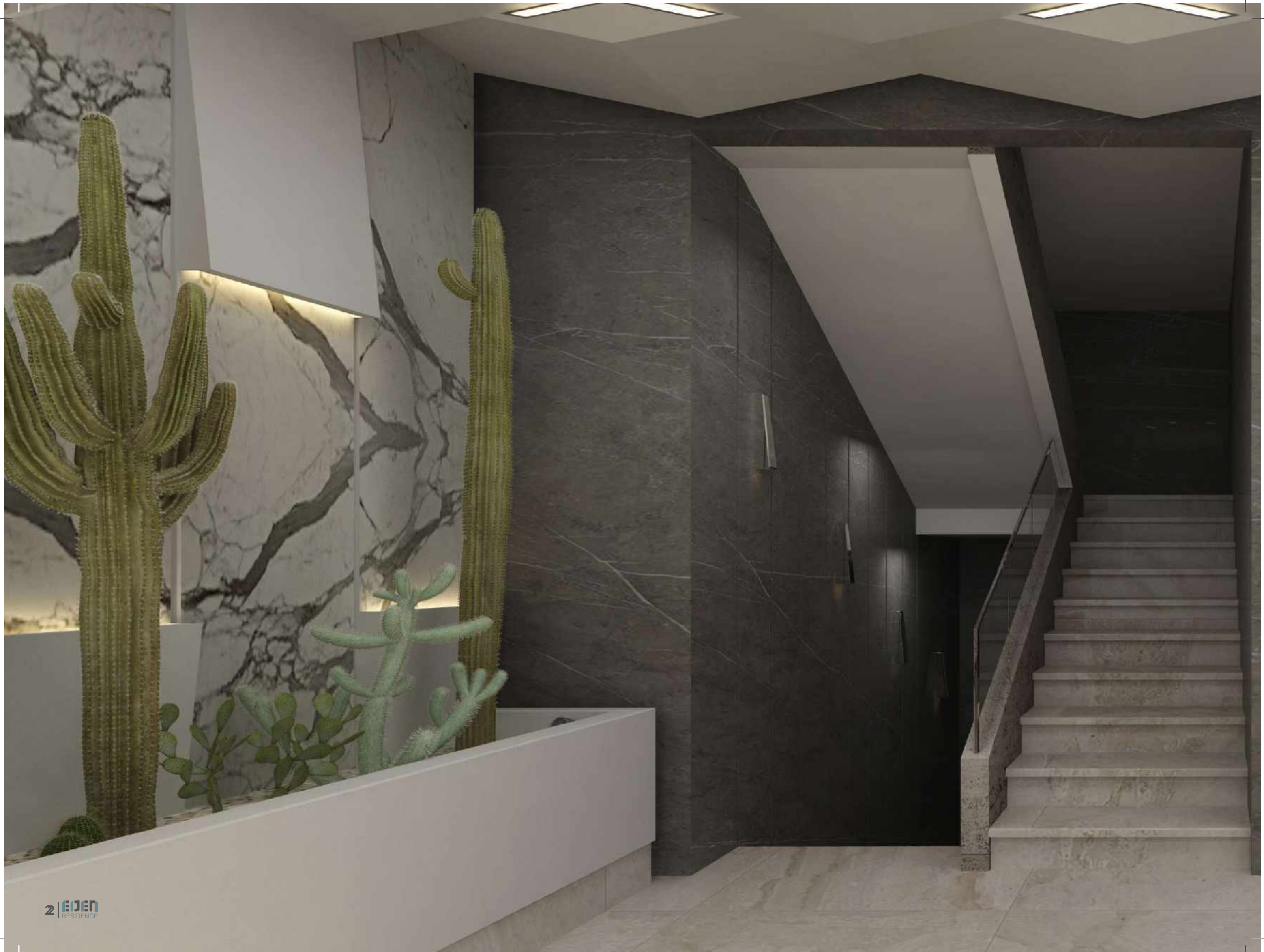
Bathroom 1

Balcony 2



TYPICAL FLOOR PLAN | BLOCK C | 215 sqm

- Master Bedroom(445x345)
- Salon & Dining (395x795)
- Living Room (455x355)
- Bedroom 1 (395x325)
- Bedroom 2 (330x410)
- Bathroom 1 (170x215)
- Bathroom 2 (170x200)
- Balcony 1 (430x190)
- Balcony 2 (485x1250)
- Kitchen (410x340)
- Maid's Room (135x210)





ENTRANCE
SALON
MASTER BEDROOM
KITCHEN





SALON

EDEN
RESIDENCE







MASTER BEDROOM





SPECIFICATIONS

CIVIL WORK

- Double wall
- Anti-Seismic design

Aluminum

- Technal Jx
- Roller Shutters
- Double Glass

Common Servises

- Generators
- Interphone Wirless
- Videophon
- 3 Parking & Storage Room
- Automatic Parking Gates
- Two Elevaters ups online & geerless

Kitchen & Wc

- European ceramic

Bedrooms

- European ceramic

Decor Gypsum Board Doors

- Veneered Oak For all doors
- Stainless Steel handles
- Wood Kitchens as per customer's request at no additional cost

Electrical & Mechanical Fixtures

- Gewiss fixture & sockets 2019
- Polypropyplene embedded pipes
- TV & telephone (lc circuit)
- Extention for split or concealed ac system
- Premium choice sanitary wares and fixtures (grohe)
- Central heating european standards
- Water tank capacity 2000-litre for each apartment

عبد
المنعم
RESIDENCE



ABED EL KARIM OTHMAN & SON'S



TALAL EL HASSAN | ARCHITECTS

www.tharchitects.net

RENDERING AND BROCHURE DESIGN ARE CREATED BY **t12** www.t12.tv



+961 3 231 736



+961 6 412 144



www.othmanconstruction.com



Info@othmanconstruction.com